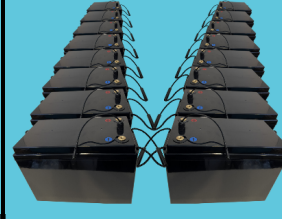


48V King-Pawn System (Single Smart BMS)



Model	KP48V-310AH	KP48V-620AH	KP48V-930AH	KP48V-1240AH
Capacity	310 Ah	620 Ah	930 Ah	1240 Ah
Nominal Capacity	16 kWh	32 kWh	48 kWh	64 kWh
Units	4	8	16	16
Weight	212 lbs	424 lbs	641 lbs	848 lbs
Unit Dimensions	14.5" x 7.5" x 10.5" - 36.8 cm x 19.1 cm x 26.7 cm			
Nominal Voltage	51.2 V			
Recommended Low Voltage	40 V			
Reconnect Voltage	44.8 V			
Floating Charge Voltage	55.2 V			
Maximum Charge Voltage	58.4			
Recommended Charge Voltage	57.6 V - 58.4 V			
Max Cont. Discharge Current	150 A			
Peak Discharge Current	300 A for 3s			
Maximum Charge Current	150 A			
Max Series/Parallel Batteries	None - Fully customized to voltage and capacity			
Discharge Temperature	-20 to 60 °C (-4 to 140 °F)			
Charge Temperature	3 to 45 °C (32 to 113 °F)			
Ideal Storage Temperature	-5 to 35 °C (23 to 95 °F)			
Optional Heating	Automatic heating below 5°C (32 °F)			
Self Discharge	<3% per Month			
Terminal	M8			
Cell Type - Chemistry	Prismatic - LiFePO4			
BMS App (Brand)	Smart BMS (Daly)			